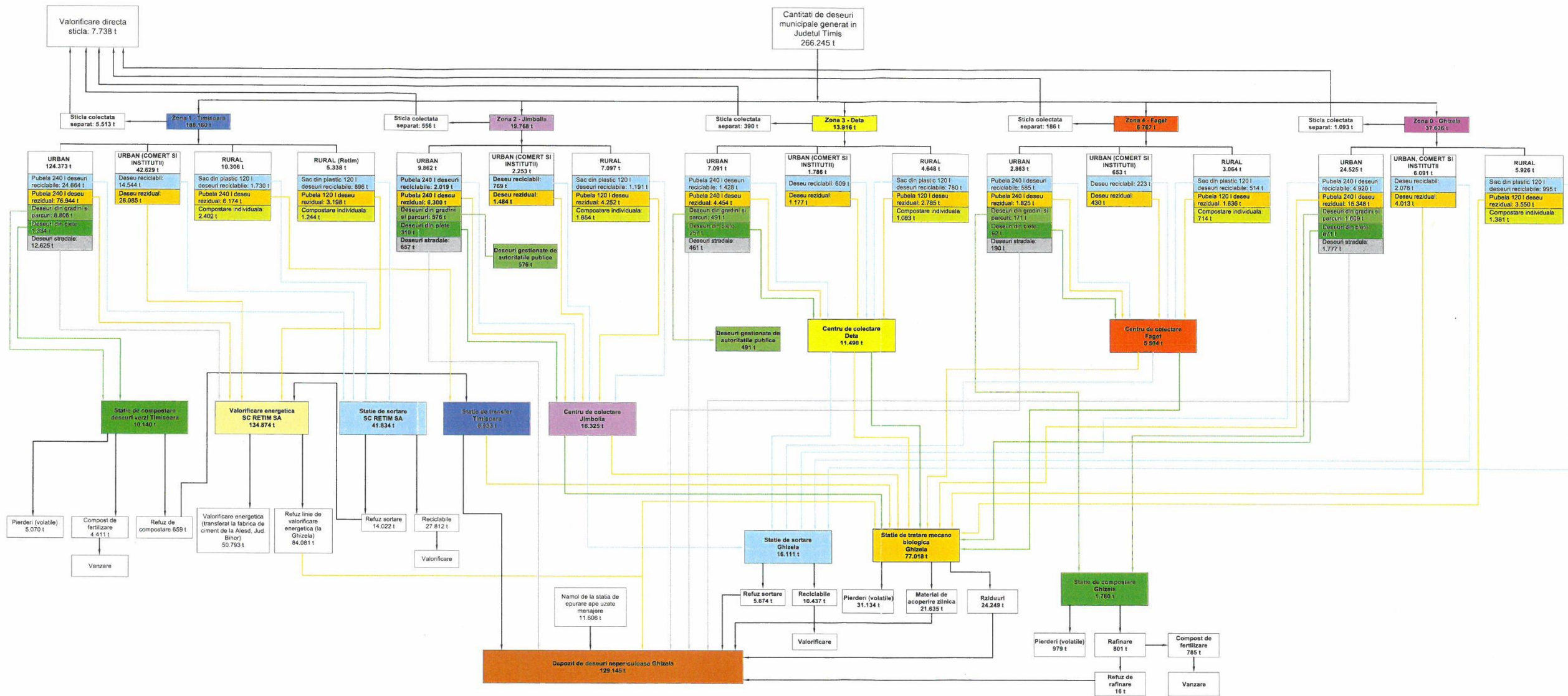


**ANEXA 3.**

**SCHEMELE FLUXURILOR DE DESEURI PE ZONELE DE  
COLECTARE ALE JUDETULUI TIMIS**

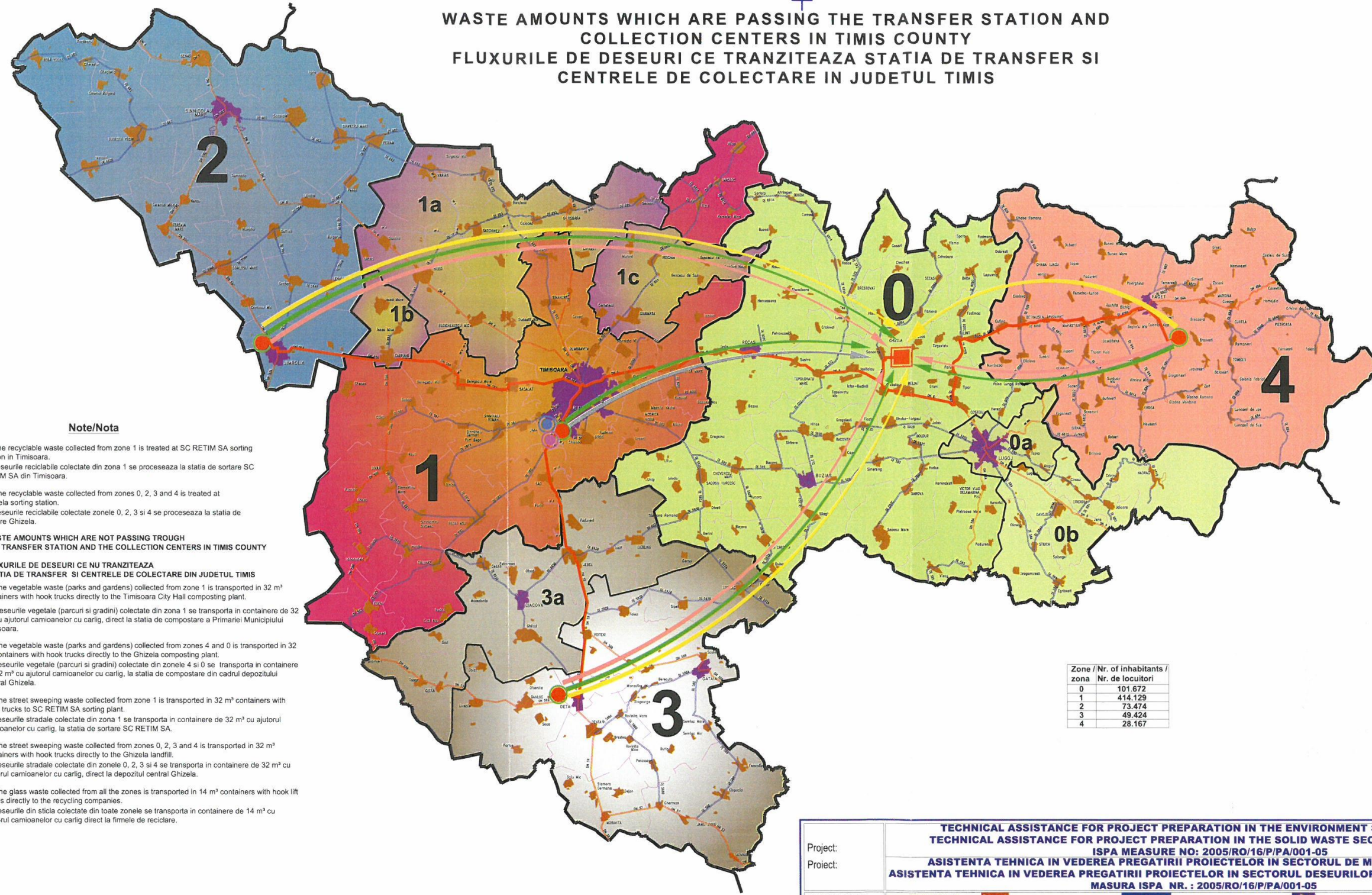
# FLUXUL DESEURILOR IN JUDETUL TIMIS IN ANUL 2013



Project:	TECHNICAL ASSISTANCE FOR PROJECT PREPARATION IN THE ENVIRONMENT SECTOR - ROMANIA		
Project:	TECHNICAL ASSISTANCE FOR PROJECT PREPARATION IN THE SOLID WASTE SECTOR - TIMIS COUNTY		
BENEFICIARY:	ISPA MEASURE NO: 2005/RO/16/P/PA/001-05		
BENEFICIAR:	ASISTENTA TEHNICA IN VEDEREA PREGATIRII PROIECTELOR IN SECTORUL DE MEDIU DIN ROMANIA		
CONSORTIUM:	MASURA ISPA NR.: 2005/RO/16/P/PA/001-05		
CONSORTIU:			
Object no.:	Scale:	Date:	Phase:
Drawing Title:	1:500.000	12. 2010	S.F.
Object nr.:	Cod proiect (Code project):		No. (Nr.):
Titlul plansei:	277 - 14- 35 / 02.2008		MP-007
Designed (Proiectat):	teh. Marin DUMITRACHE		R 0
Checked (Verificat):	ing. Alexandru BAY		
Project Manager (Self proiect):	ing. Alexandru BAY		



WASTE AMOUNTS WHICH ARE PASSING THE TRANSFER STATION AND COLLECTION CENTERS IN TIMIS COUNTY  
 FLUXURILE DE DESEURI CE TRANZITEAZA STATIA DE TRANSFER SI CENTRELE DE COLECTARE IN JUDETUL TIMIS



Note/Nota

- The recyclable waste collected from zone 1 is treated at SC RETIM SA sorting station in Timisoara.
- The recyclable waste collected from zones 0, 2, 3 and 4 is treated at Ghizela sorting station.
- The vegetable waste (parks and gardens) collected from zone 1 is transported in 32 m<sup>3</sup> containers with hook trucks directly to the Timisoara City Hall composting plant.
- The vegetable waste (parks and gardens) collected from zones 4 and 0 is transported in 32 m<sup>3</sup> containers with hook trucks directly to the Ghizela composting plant.
- The street sweeping waste collected from zone 1 is transported in 32 m<sup>3</sup> containers with hook trucks to SC RETIM SA sorting plant.
- The street sweeping waste collected from zones 0, 2, 3 and 4 is transported in 32 m<sup>3</sup> containers with hook trucks directly to the Ghizela landfill.
- The glass waste collected from all the zones is transported in 14 m<sup>3</sup> containers with hook lift trucks directly to the recycling companies.
- The waste from markets is transported in containers of 14 m<sup>3</sup> with the help of trucks directly to the recycling companies.

Zone / Nr. of inhabitants / zona	Nr. de locuitori
0	101.672
1	414.129
2	73.474
3	49.424
4	28.167



Project:	TECHNICAL ASSISTANCE FOR PROJECT PREPARATION IN THE ENVIRONMENT SECTOR - ROMANIA TECHNICAL ASSISTANCE FOR PROJECT PREPARATION IN THE SOLID WASTE SECTOR - TIMIS COUNTY ISPA MEASURE NO: 2005/RO/16/P/PA/001-05		
Project:	ASISTENTA TEHNICA IN VEDEREA PREGATIRII PROIECTELOR IN SECTORUL DE MEDIU DIN ROMANIA ASISTENTA TEHNICA IN VEDEREA PREGATIRII PROIECTELOR IN SECTORUL DESEURILOR SOLIDE - JUDETUL TIMIS MASURA ISPA NR. : 2005/RO/16/P/PA/001-05		
BENEFICIARY:	County Council TIMIS Consiliul Judetean TIMIS	European Union Uniunea Europeana	Government of Romania Guvernul Romaniei
BENEFICIAR:			Ministry of Environment and Forests Ministerul Mediului si Padurilor
CONSORTIUM:	KOCKS INGENIERIE	ENVIROPLAN ENVIROPLAN	EPEN ENEM ROMAIR CONSULTING ROMAIR
Object no.		Scale (Scara):	Phase (Faza):
Drawing Title:	WASTE AMOUNTS WHICH ARE PASSING THE TRANSFER STATION AND COLLECTION CENTERS IN TIMIS COUNTY	1:500.000	S.F.
Object nr.		Date (Data):	No. (Nr.):
Titlul plansei:	FLUXURILE DE DESEURI CE TRANZITEAZA STATIA DE TRANSFER SI CENTRELE DE COLECTARE IN JUDETUL TIMIS	07. 2010	MP-006 R 0
Designed (Proiectat):	teh. Marin DUMITRACHE	Cod proiect (Code project):	
Checked (Verificat):	ing. Alexandru BAY	277 - 14 - 35 / 02.2008	
Project Manager (Sef proiect):	ing. Alexandru BAY		